



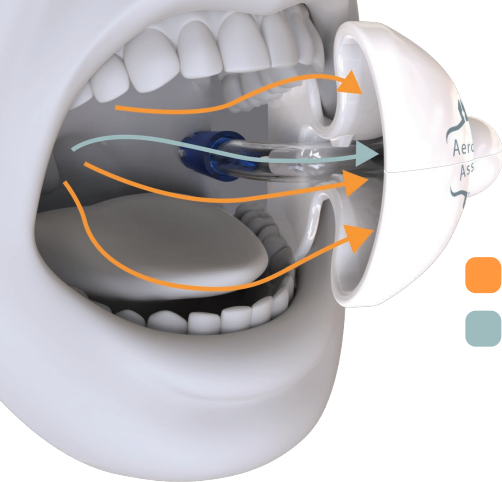
Breathe Easy!

Hands Free Aerosol
suppression system

(User Guide)

Version A.7 /O12821





 Aerosol

 Saliva

Content

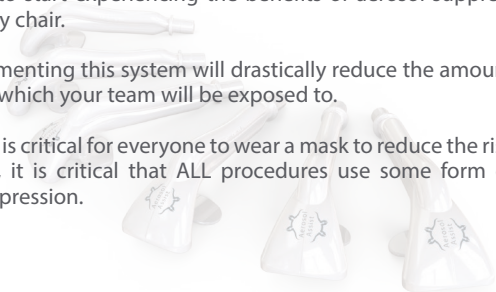
Introduction	2
What is Included?	3
Set up and Installation	4
Features	7
How to Operate	10
Cleaning and Sterilization	12
Packaging	14
CFD Analysis	15
Key Mechanical Properties	16

Introduction

Thank you for your interest in the Aerosol Assist, a hands-free aerosol suppression system. We are extremely excited for you and your team to start experiencing the benefits of aerosol suppression at every chair.

Fully implementing this system will drastically reduce the amount of aerosols which your team will be exposed to.

Much like it is critical for everyone to wear a mask to reduce the risk of aerosols, it is critical that ALL procedures use some form of aerosol suppression.



What is Included?

- 6 Aerosol Assist
 - Class VI biocompatible
 - Autoclavable

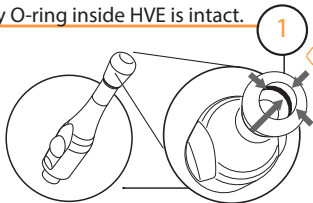


www.aerosolassist.com/setup/



Set up and Installation

Verify O-ring inside HVE is intact.



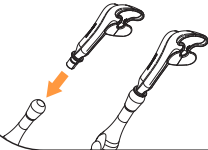
Warning:

Do not use if O-ring is missing in HVE.

Install Aerosol Assist into HVE.

2

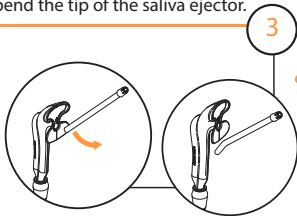
Caution:
Do not use if the Aerosol Assist connection does not support the weight of the HVE valve and hose.



It should not be loose.

Set up and Installation

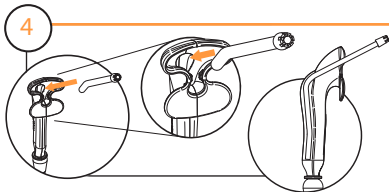
Slightly bend the tip of the saliva ejector.



Tip:

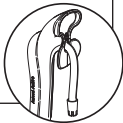
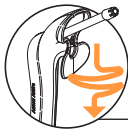
It is recommended to flush the interior of the Aerosol Assist with water to lubricate the walls so the saliva ejector is installed smoothly.

Fully insert the saliva ejector into the saliva removal port in the rear of the Aerosol Assist until you feel a stop.



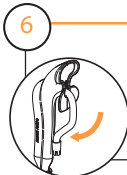
Set up and Installation

Wiggle the saliva ejector side to side as you pull it down beyond the pinching point.



5

Bend the saliva ejector so that it touches the body of the Aerosol Assist.



6

Once you release, it will go into a position that will not rest on the patient's anatomy, but will hover over it.



For more detailed instructions and videos, please visit:

<https://www.aerosolassist.com/setup/>

Interior surfaces are rounded for maximum cleanability.



Made from durable autoclavable, Medical Grade Thermoplastics.



Built-in backflow prevention.

Features

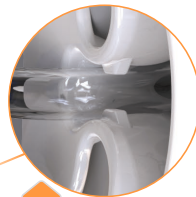
Aerosol removal port reduces aerosol during every procedure.



Fits in a standard HVE and accepts standard saliva ejectors.

Page 7

Features



Constriction point allows easy installation and removal of saliva ejector without unintentional removal.



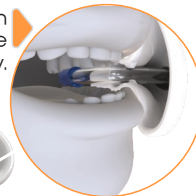
Quick connect allows for a tight seal while allowing rotation that alleviates torque transfer.

Hose length is adjustable by 5 mm to accommodate anatomical variances without losing suction.



Page 8

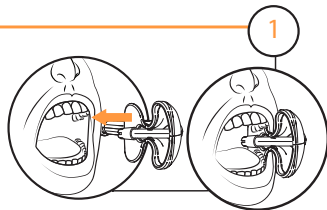
Lip anchor constriction allows the patient to close lips comfortably.



Engineered to guide disposable saliva ejector to the correct opening to initiate suction.

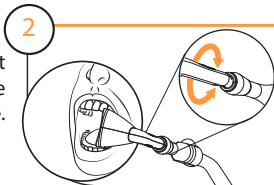
Page 9

How to Operate

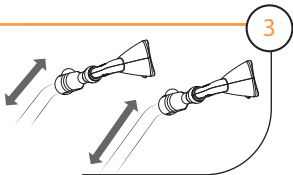


Insert buccal plate so that it's positioned between the teeth and cheek.

Rotate the Aerosol Assist to release any torque from the HVE Hose.

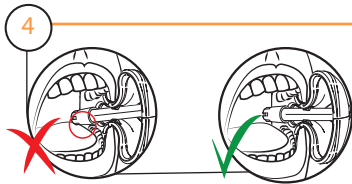


How to Operate



If the HVE hose is too short, a longer one should be considered as this will create unnecessary tension.

Make sure the saliva ejector does not rest on teeth, gums, or other anatomical components.



The saliva ejector should only touch the surface of any tissue.

Cleaning and Sterilization



1• Remove biomatter and other debris from the suction channels using a tube brush with a neutral pH enzymatic cleaning solution.

2• The brush must access both channels coming from the top and the bottom of the Aerosol Assist.



Cleaning and Sterilization



3. Rinse with tap water

4. Dry

5. Autoclave

Sterilization Cycle 30 Minutes
@ 121 Degrees Celsius at a
minimum 15 PSI

Warning: All Aerosol Assist MUST be cleaned and sterilized.

When sterilizing make sure that the Aerosol Assist:

- Has Aerosol Assist funnel opening facing upwards
- Placed in the center of the autoclave.
- Not in contact with other instruments
- Does not have any load bearing weight placed on top of the Aerosol Assist

Packaging



The Aerosol Assist kit comes with 6 individual Aerosol Assists.

One kit is recommended per chair.



CFD Analysis

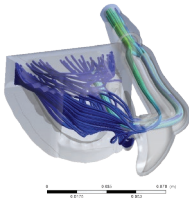


OFF



ON

Velocity
Streamline 1
1.243e+02
9.323e+01
6.215e+01
3.108e+01
0.000e+00
[m s⁻¹]



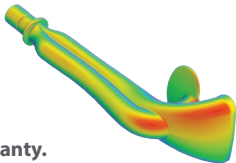
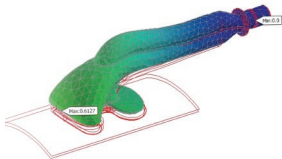
ANSYS
2020 R3

Using cutting edge computational fluid dynamics, the Aerosol Assist is optimized for maximum aerosol reduction while offering effective saliva evacuation.

Key Mechanical Properties

Medical Grade, Biocompatible, High Temperature, Autoclavable

- Tensile modulus: 2400 MPa
- Impact strength (Per Test Procedures ISO 179/1eU)
@ 23 °C (kJ/m^2) = No Break
- Heat deflection temperature: 170 °C
- Water absorption (24 hour): $\leq 0.12\%$
- Optimal plastic for steam sterilization



Includes a six months manufacturer warranty.



Aerosol Assist®
Patent Pending

www.aerosolassist.com



Designed in Miami, USA
by Pivatool, LLC